

ICP RECORDING STUDIOS

STUDIO C

CONSOLE

- 1973 EMI NEVE A3096, 36 CHANNELS, WITH 1091 EQ MODULES
- 1 OF ONLY 7 BUILT, PURCHASED FROM EMI COLOGNE STILL FITTED WITH ALL ORIGINAL PARTS.

MONITORING

- WESTLAKE AUDIO BBSM-15
 - ADAM AUDIO S3H
 - YAMAHA NS-10
- *ALTERNATIVE MONITORING AVAILABLE*

DAW

- AVID PRO TOOLS HDX 32 INPUTS 32 OUTPUTS

PERSONAL MONITOR MIXERS

- FURMAN HRM-16

PIANO

- YAMAHA LU-201C UPRIGHT PIANO



OUTBOARD

ONE OF ONLY SEVEN BUILT IN THE WORLD, THE EMI-NEVE A3096 IS CONSIDERED TO REPRESENT THE ALL-TIME PINNACLE OF AUDIO CONSOLE DESIGN. CUSTOM BUILT FOR EMI COLOGNE, IT'S THE TWIN OF THE DESK USED TO RECORD HITS SUCH AS PINK FLOYD'S 'WISH YOU WERE HERE' AT ABBEY ROAD STUDIOS (FORMERLY EMI RECORDING STUDIOS). OUR A3096 HARBORS 36 NEVE 1091 PRE AMPS / EQ'S IN ORIGINAL CONDITION, 60 RETURNS AND 12 GROUPS, IN ADDITION TO 4 ORIGINAL NEVE 2074 EQ'S & 8 ORIGINAL NEVE 2076 HIGH GAIN EQ BUS AMPS. THE RANGE OF OUTBOARD AND PLUGINS LISTED BELOW ARE DEDICATED TO STUDIO C .

MIC PRES & EQUALIZERS

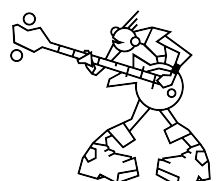
- ADR**
VOCAL STRESSER F769X-R
- K&H**
UE-400
- VALLEY PEOPLE**
MAXI-Q (X2)

DYNAMICS

- ALTEC**
436C
- DRAWMER**
DF320
DS201 (X2)
- NEVE**
32254E
33609/C
- ORBAN**
516EC DYNAMIC SIBILANCE CONTROLLER
- RCA**
BC-730-C
- RIDGE FARM**
BOILER
- SMART RESEARCH**
C2 COMPRESSOR
- UREI**
LA-4
1178
- VALLEY PEOPLE**
GAIN BRAIN II (X2)
KEPEX II (X5)

REVERBS, DELAYS & FX PROCESSORS

- BEL ELECTRONICS**
FLANGER BF20
- LEXICON**
PCM70
480L
- ROLAND**
SDE-330 DIMENSIONAL SPACE DELAY ROLAND
SDE-2000 (X2)
SDE-3000
- URSA**
SST282 MAJOR SPACE STATION
- YAMAHA**
REV7
SPX90
SPX1000



ICP RECORDING STUDIOS

STUDIO C

PLUGINS

THE RANGE OF PLUGINS LISTED BELOW ARE DEDICATED TO STUDIO C.

ANTARES

AUTO-TUNE PRO

AUDIO EASE

ALTIVERB 7

AVID

PRO TOOLS FIRST BUNDLE

CELEMONY

MELODYNE 4 STUDIO

FABFILTER

TOTAL BUNDLE

IZOTOPE

RX 7 ADVANCED

VOCALSYNTH 2

VINYL

NATIVE INSTRUMENTS

KOMplete 12 ULTIMATE

SLATEDIGITAL

FG-X

STEVEN SLATE DRUMS

TRIGGER 2 PLATINUM

OEKSOUND

SOOTHE 2

SPIFF

SERATO

PITCH 'N TIME PRO

SOUNDTOYS

5

SPECTRASONICS

OMNISPHERE 2

SYNCHRO ARTS

VOCALIGN PRO 4 DELAY

VALHALLA

FREQECHO

PLATE

ROOM

SHIMMER

SPACEMODULATOR

SUPERMASSIVE

UBERMOD

VINTAGEVERB

WAVES

ABBAY ROAD REVERB PLATES

API COLLECTION

CLA CLASSIC COMPRESSORS

MANNY MARROQUIN SIGNATURE SERIES

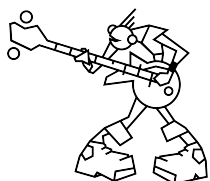
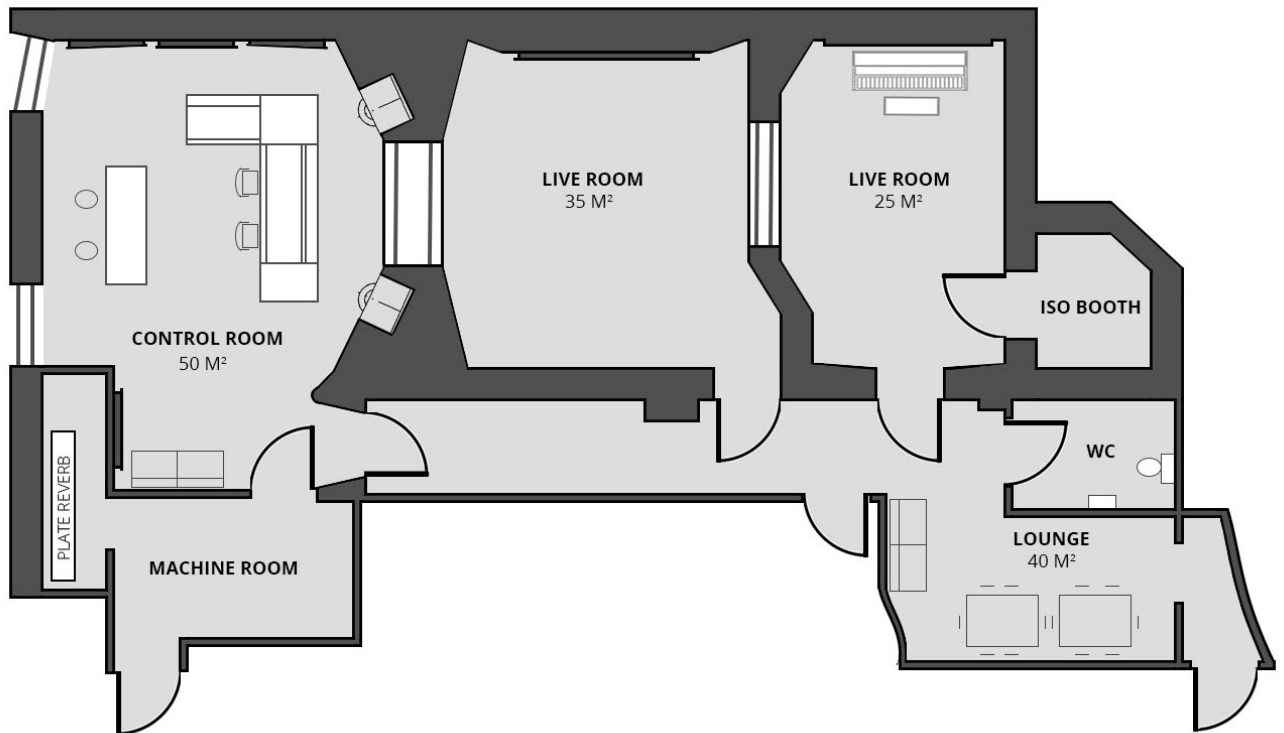
PLATINUM

SMACK ATTACK

SSL 4000 COLLECTION

TUNE REAL-TIME

FLOOR PLAN



ICP RECORDING STUDIOS

FLOATING OUTBOARD

OUR OUTBOARD EQUIPMENT SPANS THE HISTORY OF THE INDUSTRY, FROM GEAR YOU HAVE HEARD OF AND SEEN TO ULTRA-RARE ITEMS. PLEASE NOTE FLOATING OUTBOARD IS SUBJECT TO AVAILABILITY.

MIC PRES & EQUALIZERS

AMEK
CHANNEL IN A BOX (X2)
PURE PATH DMCL (X2)

API
512C (X2)
550 SAUL WALKER EDITION (X2)
560 (X2)

AVALON
AD2022

BLUE
ROBBIE

BSS
DPR-901 DYNAMIC EQUALIZER (X2)

CADAC
G268-E(X6)

CHANDLER
TG12345 CURVE BENDER
REDD.47 MIC AMPLIFIER (X2)

D.W. FEARN
VT-2

EAR
823 MQ

FOCUSRITE
RED 2 STEREO EQUALIZER

GML
8200

JOEMEEK
VC1 THE BRICK (X2)

MOOG
MKPE 3 BAND PARAMETRIC EQUALIZER

NEUMANN
OE DUO EQ (X3)
V476B

NEVE
1073LB (X2)
1073DPX

PULTEC
HLF-3C (X2)

SIEMENS
V72 (X6)
V76 (X2)

UREI
546 DUAL PARAMETRIC EQ

DYNAMICS

ALTEC
1591A
1612B

ANTHONY DEMARIA LABS
1000

AUDIO DESIGN
F769X-R VOCAL STRESSER

CADAC
G255 COMPRESSOR (X2)

CHANDLER
TG12413 ZENER LIMITER

DBX
160X COMPRESSOR/LIMITER (X2)

EMPIRICAL LABS
DISTRESSOR (X2)

EMT
156 PDM COMPRESSOR (X2)
256 COMPRESSOR (X2)
260 FILTER LIMITER (X2)
261 COMPRESSOR/LIMITER (X2)

FAIRCHILD
MODEL 660
MODEL 670 MKII

GATES
SA-39B (X2)

GYRATEC
X (X2)

LISSEON GROVE
AR-1 (X2)

NEUMANN
U473 (X4)

NEVE
32254E (X2)

PYE
COMPRESSOR/LIMITER STEREO PAIR (X2)

RAYTHEON
MODEL RL-10

RCA
MODEL 86-B

RETRO
STA-LEVEL

SMART RESEARCH
C2 COMPRESSOR

TELETRONIX
LA-2A (X2)

TRI-TRONICS
CA-1782 (X2)

TUBE-TECH
CL-1A

UREI
1176LN (X3)

VALLEY PEOPLE
GAIN BRAIN II (X2)
KEPEX II NOISE GATE (X4)
440 COMPRESSOR/LIMITER
610 STEREO DYNAMIC PROCESSOR

WSW
601430S COMPRESSOR/LIMITER

REVERBS, DELAYS & FX PROCESSORS

AMS
DM2-20 TAPE PHASE SIMULATOR

APHEX
AURAL EXCITER

APHEX
AURAL EXCITER TYPE B
AURAL EXCITER TYPE C

BBE
SONIC MAXIMIZER 822 (X2)

BINSON
ECHOREC (X2)
ECHOREC PE 603-TU

BRICASTI
M7

ECHOPLEX
(X2)

EVENTIDE
H3000 SE

FULLTONE
TUBE TAPE ECHO

HH ELECTRONIC
MULTI-ECHO

KORG
13 PERFORMANCE SIGNAL PROCESSOR

LEXICON
PCM70
DELTA-T MODEL 102 (X2)

MOOG
MKPH 12 STAGE PHASER

MXR
M129 PITCH TRANSPOSER

ROCKMAN
STEREO CHORUS/DELAY
SUSTAINOR

ROGER MAYER
456HD (X2)

ROLAND
RE-3 SPACE ECHO
SDD-320 DIMENSION-D
SBF-325 STEREO FLANGER
SPH-323 PHASE SHIFTER
SRE-555 CHORUS ECHO
SVC-350 VOCODER

SONY
MU-R201 STEREO DIGITAL REVERB

SPL
SX2 PSYCHOACOUSTIC PROCESSOR

SYNTON
203 PHASER

T.C.
ELECTRONIC FINALIZER
ELECTRONIC FIREWORX
ELECTRONIC TC 2290

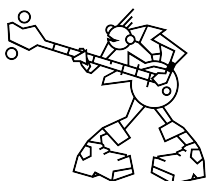
TECH 21
SANSAMP PSA-1

THERMIONIC
CULTURE VULTURE

WATKINS
COPICAT
COPICAT SUPER SHADOW (X2)

YAMAHA
REV-1
REV-7 (X2)

ZOOM
9010 ADVANCED SOUND PROCESSOR



ICP RECORDING STUDIOS

MIC LOCKER

WE HAVE ONE OF THE MOST UNIQUE AND HISTORICAL COLLECTIONS OF MICROPHONES IN THE WORLD; ALL REGULARLY SERVICED.
PLEASE NOTE MICROPHONES ARE SUBJECT TO AVAILABILITY.

CONDENSOR MICS

AKG
C414 B
C414 B-ULS
C414 EB (X4)
C414 XLII (X3)
C414 XLII B (X2)
C451 EB (X4)
460 B (X4)
535 EB (X3)
C34

ASTON
STARLIGHT STEREO PAIR

AUDIO-TECHNICA
AT5040

BEYERDYNAMIC
MC740
NMPC50 (X2)

BRUEL & KJAER
4006 (X2)
4011

CROWN
PZM-315
SASS-P

DPA
4006A (X2/STEREO PAIR)

ELECTROVOICE
RE2000 (X2)

GEFELL
M71S (X2)
M300 (X2/STEREO PAIR)
M900
M930 (X2/STEREO PAIR)
PM860 (X2/STEREO PAIR)
PM750 (X2/STEREO PAIR)

MILAB
DC-63 (X2)
MP-30 HEMI (X4)
VIP-50

NEUMANN
KM 84 (X7)
KM 184 (X2)
TLM 171
U-47 FET (X4)
U-87 (X4)

SHURE
KSM9
SM81 (X2)
SM91A (X2)

SONY
C-48
C-100

VALVE MICS

AKG
C12 VR (X3)

BLUE
BOTTLE (X2)

GROOVE TUBES
MD1

MANLEY
BABY TUBE
REFERENCE CARDIOD TUBE

NEUMANN
MV 690 P
MV 691 P (X2/STEREO PAIR)
U-47
U-47P
U-48
CMV-3A
CMV-4 (X2)
CMV-4A (X2)
CMV-5
CMV-5A
CMV-5B (X2)
CMV-551
CMV-561
CMV-562
CMV-563 (X2)
CMV-564
CMV-582 (X2/STEREO PAIR)+M94
CMV-583 (X4/STEREO PAIRS)
M14-B (X3/STEREO PAIR)
M49
M582 (X4/STEREO PAIRS)
M582-H
SM2
UM57 (X2/STEREO PAIR)
U64 (X1/STEREO PAIRS)
U67 REVIVAL EDITION (X2)
ZUM 64

SCHOEPS
M221F (X2/STEREO PAIR)

SENNHEISER
MKH 40-P48 (X2)

TELEFUNKEN
ELA M2 (X2)
M260
M221B

DYNAMIC MICS

AKG
D12 VR
D12 E (X2)
D12 E GOLD
D20

AUDIX
D6

BEYERDYNAMIC
M380 TG (X2)
M88 TG (X2)

BLUE
THE BALL (X2)

CAD
KBM412 (X2)

ELECTROVOICE
RE20 (X3)

SENNHEISER
BLACKFIRE
421 (X3)
421 U-4 (X7)
MD 504 (X4)
E609 (X2)
E604 (X2)

SHURE
5575LE
BETA 52
BETA 56
BETA 57 (X4)
SM7 (X2)
SM57 (X13)
SM58 (X3)
545 (X2)
545S (X2)

STANDARD ELECTRIC
4021C (BALL & BISCUIT) (X6)

TELEFUNKEN
D19 BK

YAMAHA
SKRM100 SUB KICK

RIBBON MICS

AEA
R84 (X2)

AUDIO-TECHNICA
AT4080 (X2)

BEYERDYNAMIC
M160 N

COLES
BBC 4038 (X4)
4040 (X2)

EXTINCT AUDIO
BM9
BM—B BLACK OPS LMT 3639

OKTAVA
ML 52-02

RCA
44-BX
BK-5B
639B (X2 / STEREO PAIR)

ROYER
R-122 (X4)

SONTRONICS
APOLLO 2

ALTERNATIVE MONITORING

PLEASE NOTE ALTERNATIVE MONITORING IS SUBJECT TO AVAILABILITY

ADAM AUDIO
S3H

ATC
SCM45A PRO

AURATONE
5C SUPER SOUND CUBE

FOCAL
TWIN6 BE

GENELEC
1029A
1030A
1031A
1032A

KRK
EXPOSE 8B

PROAC
STUDIO 100

YAMAHA
NS-10

